

Tools for monitoring vehicles

Business in motion

- Designed for any kind of Mobile Business
- Advanced Tool for Fleet Surveillance, Data Acquisition and Mobile Workforce Management
- Gives detailed Overview and full Analysis of Fleet Activities
- Enables Safe and Secure data transfer and distribution



Technology

- Includes set of advanced technologies
- GPS
- GSM
- WiFi
- Bluetooth
- RFID
- CANbus
- SQL
- GIS

Application

- Supports any size or fleet type
- Suitable for all kinds of Mobile Assets
 - Trucks, Vans, Cars, Trains, Machines, Boats, Yachts, etc.
- Solution for any type of Business
 - Transport, Construction, Trade, Distribution, Agriculture, ...
- Usable in any Department
 - Logistics, Sales, Distribution, Support, Marketing, Management, Service, ...

The Value Proposition

- Improve Operational Efficiency
- Reduce Costs
- Improve Client Service
- Optimize Fleet Utilization
- Increase Productivity
- Gain Greater Control
- Enable Fleet Visibility
- Increase Safety

Return of Investment

- ↑ Efficiency
- ↑ Productivity
- ↑ Quality
- ↑ Security
- ↓ Mileage
- ↓ Overtime
- ↓ Expenses
- ↓ Fuel



RoI = 6 - 10 months

System architecture



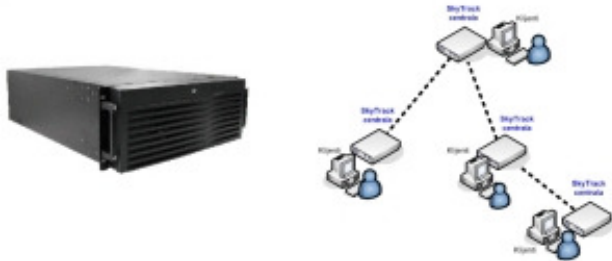
SkyTrack Mobile

- Tracking devices
- Tracking location, speed, direction, acceleration, height
- Additional: Engine ON/OFF, open/close doors, fuel consumption, temperature, drivers ID, gas/oil dispensing, RFID, ...
- Interface to existing solutions in vehicles
- Large internal Duffer for collected Data
- Multiple communication possibilities (GPRS, CSD, WiFi,...)



SkyTrack central

- Data collection, processing & storage system
- Automated services insures uninterrupted functionality
- SQL database secures data integrity
- Connectors for Data Exchange with existing IT solutions
- Multiple SkyTrack Servers enables forming of clusters



Data transfer

- Safe & Secure Async. Data Transfer
- Every SkyTrack device acts as interstorage & router in network
- Independent functioning of every part of system
- Protocol adjustable according to GSM provider



SkyTrack Application Suite

- Designed for collecting, processing & analyzing fleet activity
- Fleet visibility & status
- Speeds up & improves planning
- Right time & accurate decision making
- Vehicle guidance
- Tele Atlas maps

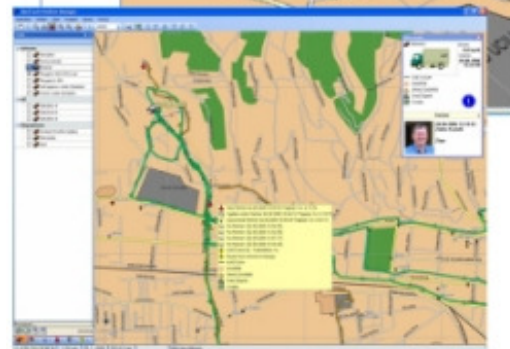
Position Manager

- Overview of fleet status & location
- Objects, zones, routes
- Tracking unlimited number of vehicles
- Route & activity history
- Includes extremely fast mapping engine



Statistics

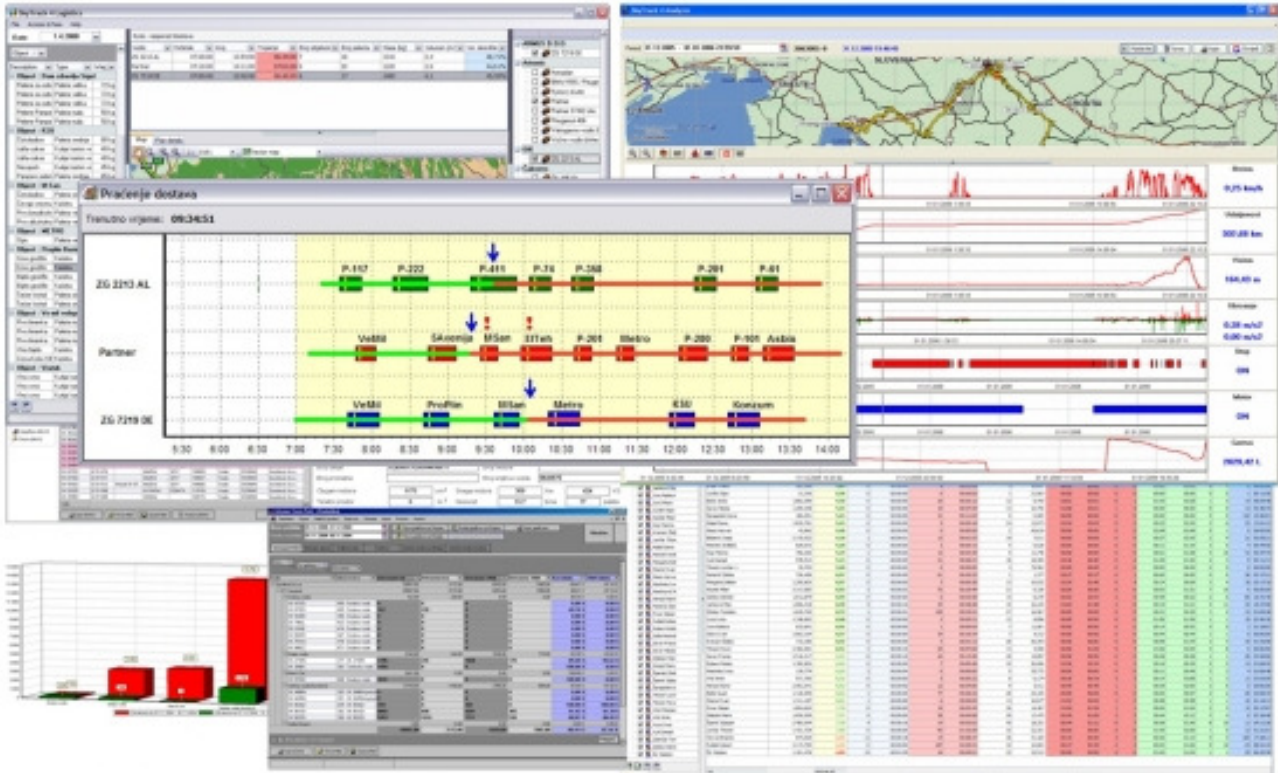
- Statistical overview for selected period
- List of all events
- Sorting, grouping & filtering all data
- Text, table & chart view
- Export to standard formats



Analytics

- Vehicle Analytics
- Driver Analytics
- Object Analytics
- Vehicle & Events Log
- Text, table & chart view
- Export to standard formats

Application overview



SkyTrack PDA Application Suite

- On the field
 - PDA Position Manager
 - PDA Messenger
 - SkyTrack Shop
 - Routing
 - Navigation

Delivery Tracking

- For each delivery driver have to confirm with further clarification
- The dispatcher can send a message to the driver at any time

Advantages

- The system is owned by the user
- Equipment and all data are located at the user location
- Scalable & flexible
- Safe & secure configurable data transfer
- Simple connection with existing IT solutions
- Full control over expenses
- Customizable to user requests
- Simple Maintenance